

The Black Dongle can be upgraded to include more functions or enhance the system. You need to collect the data from your dongle and send it back to GeoVision for an upgrade. The upgrade is charged services. To upgrade your dongle, follow these steps:

1. Each dongle has its own serial number. Find it on the side of the dongle. Later this serial number will be used in naming the files for upgrading.

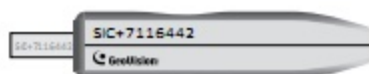


Figure 9

2. Insert the dongle to the computer.
3. In the GV folder, double-click **GVUsbKeyUpClient.exe**. This dialog box appears.

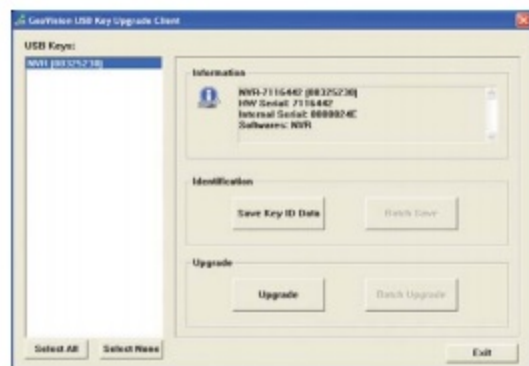


Figure 10

4. To retrieve the data from the dongle, click **Select All**. The information of the dongle will be displayed in the information field. Note the displayed number of "HW Serial" should be the same as that on the dongle.

5. To save the data to your local computer, click **Save Key ID Data**. If you have more than one dongle to upgrade, click **Batch Save**. Different dongle data will be saved as separate files. The file will be named after the serial number on the dongle and saved as *.out. For example, if a dongle serial number is 7116442, the file is named "NVR-7116442.out".
6. Send this data file to GeoVision at sales@geovision.com.tw. The GeoVision will examine the data file and send an *.in file back to you. The file name also includes the serial number of that dongle. In this example, the data file to be sent back is named "NVR-7116442.in".
7. After you receive the updated file, insert the correct dongle matching the .in file you receive, and then run **GVUsbKeyUpClient.exe**.
8. Click **Select All** to read the dongle, click **Upgrade** and then open the updated file to upgrade the dongle. You can also select more than one dongle in the list and click **Batch Upgrade** to upgrade them at the same time. Make sure these dongles match the updated files you receive.



9F, No. 246, Sec. 1, Neihu Rd.,
Neihu District, Taipei, Taiwan
Tel: +886-2-8797-8377
Fax: +886-2-8797-8335
sales@geovision.com.tw
<http://www.geovision.com.tw>